

THE ART OF ELYSIUM

PRESENTS

PIECES OF
HEAVEN

ART AUCTION



THE ART OF ELYSIUM
CORDIALLY INVITES YOU AND A GUEST TO

PIECES OF HEAVEN

SILENT AND LIVE AUCTION

THURSDAY, FEBRUARY 12th, 2009

CHRISTIE'S

360 NORTH CAMDEN DRIVE
BEVERLY HILLS, CA 90210

6.30PM – 8PM

AUCTION REGISTRATION &
SILENT AUCTION

8PM – 9PM

LIVE AUCTION

AUCTIONEER //

ANDREA FIUCZYNSKI,
PRESIDENT, CHRISTIE'S

HOSTED BY //

SHIVA ROSE
CAMERON SILVER
KIMM & AL UZIELLI

PLEASE RSVP BY FEBRUARY 9TH TO
RSVP@THEARTOFFELYSIUM.ORG

THIS INVITATION IS NON-TRANSFERABLE

FOR MORE INFORMATION OR TO SCHEDULE A PRIVATE VIEWING OF THE COLLECTION
PLEASE CONTACT LAURA VILLASENOR AT LVILLASENOR@THEARTOFFELYSIUM.ORG



CHRISTIE'S

IN 2008, THE ART OF ELYSIUM

WAS ABLE TO PROVIDE ARTISTIC WORKSHOPS TO OVER 26,000 HOSPITALIZED CHILDREN AND THEIR FAMILIES IN THE LOS ANGELES AREA. ON JANUARY 10TH, 2009, THE ART OF ELYSIUM CELEBRATED ELEVEN WONDERFUL YEARS OF INSPIRING ARTISTS AND INSPIRING CHILDREN AT "HEAVEN", OUR ANNUAL BLACK-TIE GALA SPONSORED BY CARTIER, RELATIVITY MEDIA AND VOGUE. IN CONNECTION WITH THIS CELEBRATION, PIECES OF ARTWORK WERE GENEROUSLY DONATED BY ARTISTS, DEALERS AND PRIVATE COLLECTORS. THIS ARTWORK IS FEATURED IN THE EXQUISITE COFFEE TABLE HEAVEN ART BOOK GIFTED AT THE HEAVEN GALA. THE ART AUCTION IS A CONTINUATION OF OUR ANNUAL CELEBRATION WHERE WE WILL BE AUCTIONING OFF ALL THE PIECES OF HEAVEN WITH 100% OF THE PROCEEDS TO BENEFIT THE ART OF ELYSIUM'S ARTS PROGRAMS TO HOSPITALIZED CHILDREN. WE ARE DEEPLY GRATEFUL TO ALL THE CONTRIBUTING ARTISTS, DEALERS, PRIVATE COLLECTORS AND CHRISTIE'S FOR CONTRIBUTING TO THE SUCCESS OF OUR ANNUAL CELEBRATION.

THESE ARE THE PIECES OF HEAVEN...

PIECES OF HEAVEN

ABSENTEE BID AND REGISTRATION FORM //



THE ART OF ELYSIUM

3278 WILSHIRE BLVD, PENTHOUSE
 LOS ANGELES, CALIFORNIA 90010
 TEL_ 213.385.9272 FAX_ 213.385.9273
 INFO@THEARTOFELYSIUM.ORG
 WWW.THEARTOFELYSIUM.ORG

PLEASE, CHECK HERE IF THIS IS AN ABSENTEE BID ONLY*
 _____ BIDDER NUMBER (PROVIDED AT LIVE AUCTION ONLY)

NAME

ADDRESS

TELEPHONE FAX EMAIL

SPECIAL INSTRUCTIONS

.....

LOT NUMBER //	ARTIST NAME //	TITLE //	YOUR TOP BID // (FOR ABSENTEE BIDDERS ONLY)*
.....	\$
.....	\$
.....	\$
.....	\$
.....	\$
.....	\$
.....	\$
TOTAL BID AMOUNT //			\$ _____

DELIVERY OPTIONS //

- COURIER DELIVERY WITHIN THE LOS ANGELES AREA ONLY (ADDITIONAL \$50 FEE WILL APPLY)
- PICK UP AT THE ART OF ELYSIUM OFFICES BY FRIDAY, FEBRUARY 20TH. (THE ART OF ELYSIUM WILL NOT BE RESPONSIBLE FOR ANY ITEM AFTER THIS DATE)

PLEASE, EXECUTE THESE BIDS ON MY BEHALF

SIGNATURE DATE

PAYMENT METHOD VISA MASTER CARD CHECK #

CARD NUMBER EXPIRATION DATE

SECURITY CODE (3 DIGIT # ON THE BACK)..... NAME ON THE CARD

TERMS OF SALE //

1. The Auction will begin at 7:00pm and continue until 8:30pm. The silent auction will be closed at 7:30pm and no bids will be accepted after the closing.
2. Winners will be posted at 8:30pm. Payment and pick-up will be in the check-out area. Any art not picked up the evening of the event will incur a delivery charge of \$50 to be paid by the winner. The Art of Elysium will contact the winner within 7 days to make arrangements.
3. Each item has a bid sheet. Clearly print your name, phone number, and bid on the sheet.
4. Each item has a minimum opening bid and a minimum raise. Successive bids that do not meet the minimum raise will be voided.
5. Values quoted are estimates only and are not warranted for general value for tax purposes.
6. The Art of Elysium assumes no risk, responsibility or liability for any item offered. All items are sold as is.
7. All bids are binding. Should you be the highest bidder, your winning bid is final and tax-deductible to the fullest extent of the law. The Art of Elysium is a 501(c) (3) organization. Tax ID number 95-4673306.
8. Bidding automatically constitutes agreement with these terms.

* ABSENTEE BIDS MUSTS BE RECEIVED BY MAIL AT THE ART OF ELYSIUM OFFICE BY FEBRUARY 6TH TO BE CONSIDERED

* VALID CREDIT CARD INFORMATION IS REQUIRED IN ORDER TO PLACE AN ABSENTEE BID

* YOU WILL BE NOTIFIED BY PHONE BY THE ART OF ELYSIUM WITHIN 7 BUSINESS DAYS AFTER THE AUCTION IF YOU MADE A SUCCESSFUL BID

THE ART OF ELYSIUM

PIECES OF HEAVEN

SILENT AND LIVE AUCTION

2009 COLLECTION

PIECES OF HEAVEN //



DAVE ANDERSON //

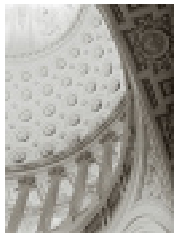
SILO, 2004

SIZE_ 10x10 INCHES

MEDIUM_ GELATIN SILVER PRINT

SIGNED / COURTESY OF THE ARTIST
AND SUSAN SPIRITUS GALLERY

GUIDEVALUE_ \$600



ROBERT BENGTSOEN //

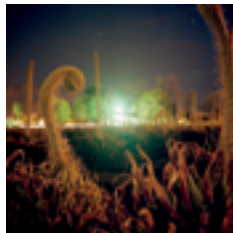
CITY HALL #5, 2005

SIZE_ 14x10 INCHES

MEDIUM_ ARCHIVAL PIGMENT PRINT

SIGNED / COURTESY OF UNTITLED GALLERY
SAUSALITO AND NATHAN WONG

GUIDEVALUE_ \$500



MATTHEW BESINGER //

EXPERIMENTAL FIELD, 2001–2005

SIZE_ 24x30 INCHES

MEDIUM_ C-PRINT / SIGNED

COURTESY OF THE ARTIST

GUIDEVALUE_ \$700



JULIE BLACKMON //

THE POWER OF NOW, 2008

SIZE_ 32x42 INCHES

MEDIUM_ ARCHIVAL PIGMENT

PRINT / ARTIST PROOF / SIGNED

COURTESY OF THE ARTIST

GUIDEVALUE_ \$4,200



SUSAN BURNSTINE //

SUBMERGE, 2007
SIZE_ 12x12 INCHES
MEDIUM_ ARCHIVAL PIGMENT
HAND VARNISHED / SIGNED
COURTESY OF THE ARTIST
GUIDEVALUE_ \$850



TOM CHAMBERS //

SURPRISE FLIGHT, 2004
SIZE_ 20x16 INCHES
MEDIUM_ PHOTOMONTAGE
SIGNED / COURTESY OF THE ARTIST
GUIDEVALUE_ \$900



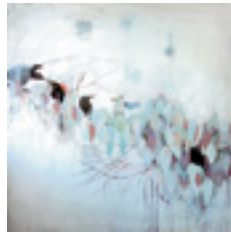
TOFER CHIN //

WAVE RUNNER, 2008
SIZE_ 5.25x13.5 INCHES
MEDIUM_ ACRYLIC ON WATERCOLOR
PAPER / SIGNED / COURTESY OF THE ARTIST
GUIDEVALUE_ \$1,000



CLAYTON BROTHERS,
ROB CLAYTON
AND CHRISTIAN CLAYTON //

DON'T KILL ME, 2008
SIZE_ 11x8.5 INCHES
MEDIUM_ MIXED MEDIA ON PAPER
SIGNED / COURTESY OF THE ARTISTS
GUIDEVALUE_ \$2,250



CHRISTOPHER CUSEO //

THE COUNCIL OF CROWS, 2008
SIZE_ 60x60 INCHES
MEDIUM_ ACRYLIC ON CANVAS
SIGNED / COURTESY OF THE ARTIST
GUIDEVALUE_ \$6,000



HENRY DILTZ //

RAY CHARLES
SIZE_ 16x20 INCHES
MEDIUM_ GELATIN SILVER PRINT
SIGNED / COURTESY OF THE ARTIST
GUIDEVALUE_ \$900



HENRY DILTZ //

KURT COBAIN ON STAGE
LOS ANGELES, 1993
SIZE_ 16x20 INCHES
MEDIUM_ ARCHIVAL DIGITAL PRINT
SIGNED / COURTESY OF THE ARTIST
GUIDEVALUE_ \$1,200



HENRY DILTZ //

NEIL YOUNG, SAN DIEGO, 1969
SIZE_ 16x20 INCHES
MEDIUM_ GELATIN SILVER PRINT
SIGNED / COURTESY OF THE ARTIST
GUIDEVALUE_ \$1,500



DAVID DREBIN //

YELLOW SWIMMING POOL, 2001
SIZE_ 16.25x23 INCHES
MEDIUM_ DIGITAL C-PRINT
SIGNED / COURTESY OF THE ARTIST
GUIDEVALUE_ \$1,600



SHEPARD FAIREY //

OBEY ZAPATISTA WOMAN, 2005
 SIZE_ 44x30 INCHES
 MEDIUM_ SPRAY PAINT, COLLAGE
 AND SCREEN PRINT ON PAPER
 SIGNED / COURTESY OF THE ARTIST
 GUIDE VALUE_ \$6,000



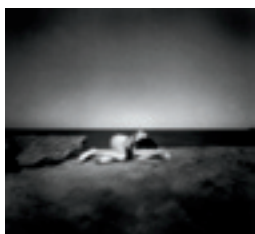
EMMA FERREIRA //

FEVER, 2008
 SIZE_ 40x40 INCHES
 MEDIUM_ MIXED MEDIA, PHOTOGRAPHIC
 IMAGE AND EPOXY ON WOOD PANEL
 SIGNED / COURTESY OF THE ARTIST
 GUIDE VALUE_ \$6,000



JAMES GILBERT //

AFTERNOON SECRET, 2008
 SIZE_ 30x22.5 INCHES
 MEDIUM_ INK ON PAPER
 SIGNED / COURTESY OF THE ARTIST
 GUIDE VALUE_ \$900



HUGH HAMILTON //

BY THE WATER I LAY DOWN, 2003
 SIZE_ 26x24 INCHES
 MEDIUM_ PINHOLE PHOTOGRAPH
 GICLÉE PRINT ON GERMAN
 ETCHING PAPER / SIGNED
 COURTESY OF THE ARTIST
 GUIDE VALUE_ \$800



JIM HERRINGTON //

CHEETA, MOVIE STAR AND
 WORLD'S OLDEST CHIMPANZEE,
 PALM SPRINGS, CA, 2006
 SIZE_ 20x24 INCHES MEDIUM_ GICLÉE
 PRINT FROM SILVER NEGATIVE
 SIGNED / COURTESY OF THE ARTIST
 GUIDE VALUE_ \$1,000



TODD HIDO //

UNTITLED, 2007
 SIZE_ 11x14 INCHES
 MEDIUM_ TRADITIONAL COLOR PRINT
 SIGNED / COURTESY OF THE ARTIST
 AND ROSE GALLERY, SANTA MONICA
 GUIDE VALUE_ \$900



JK5 //

SUBCONSCIOUS SLIPPERS, 2007
 SIZE_ 16x12 INCHES
 MEDIUM_ ACRYLIC ON WOOD PANEL
 SIGNED / COURTESY OF THE ARTIST
 GUIDE VALUE_ \$1,000



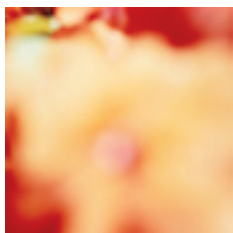
CHRIS JORDAN //

SPOOLS, SEATTLE 2003
 SIZE_ 44x62 INCHES
 MEDIUM_ PHOTOGRAPHIC INKJET PRINT
 SIGNED / COURTESY OF THE ARTIST
 GUIDE VALUE_ \$3,500



SID KAPLAN //

CENTRAL PARK, NEW YORK CITY (DUDES), 1955
 SIZE_ 15.875x19.75 INCHES
 MEDIUM_ GELATIN SILVER PRINT / SIGNED
 © SID KAPLAN, COURTESY OF THE ARTIST
 AND DEBORAH BELL PHOTOGRAPHS
 GUIDE VALUE_ \$3,500



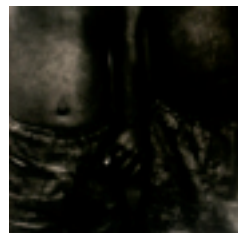
KEIRA KOTLER //

LUMINA PEACH 101005, 2006
SIZE_ 28x30 INCHES
MEDIUM_ LIGHT JET PRINT ON ALUMINUM
SIGNED / COURTESY OF UNTITLED GALLERY,
SAUSALITO AND NATHAN WONG
GUIDEVALUE_ \$2,500



MARK LAITA //

PARROT TULIP, 2005
SIZE_ 24x20 INCHES
MEDIUM_ PIGMENT PRINT
SIGNED / COURTESY OF THE ARTIST
GUIDEVALUE_ \$2,500



MATT MAHURIN //

NICARAGUA
SIZE_ 15.75x13 INCHES
MEDIUM_ PLATINUM PALLADIUM
PHOTOGRAPH / SIGNED
COURTESY OF THE COLLECTION
OF ELI CONSILVIO
GUIDEVALUE_ \$2,500



ALIA MALLEY //

REDLANDS, 2005
SIZE_ 16x20 INCHES
MEDIUM_ ARCHIVAL PIGMENT PRINT
ARTIST PROOF / SIGNED
COURTESY OF THE ARTIST
GUIDEVALUE_ \$1,500



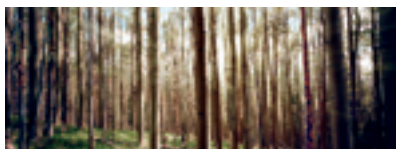
GREG MILLER //

LIFESAVERS #2, 2008
SIZE_ 22.5x35.5 INCHES
MEDIUM_ OIL, PAPER, RESIN ON PANEL
SIGNED / COURTESY OF THE ARTIST
GUIDEVALUE_ \$6,000



STAN MILSTEIN //

COOPERATIVE, 1955
SIZE_ 40x30 INCHES
MEDIUM_ ARCHIVAL FINE ART
WATERCOLOR GICLÉE
SIGNED / COURTESY OF THE ARTIST
GUIDEVALUE_ \$1,350



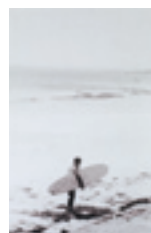
KAREN MORGAN //

STICKS, 2008
SIZE_ 14x37.5 INCHES
MEDIUM_ ULTRACHROME INKJET
SIGNED / COURTESY OF THE ARTIST
GUIDEVALUE_ \$1,700



MICHAEL MULLER //

HEALING BODIES, 2008
SIZE_ 20x30 INCHES EDITION_ 7/7
MEDIUM_ C-PRINT / SIGNED
COURTESY OF THE ARTIST
AND GUY HEPNER CONTEMPORARY
GUIDEVALUE_ \$3,000



NINO MUNOZ //

SURFER 4, MAINE, 2005
SIZE_ 14x11 INCHES
MEDIUM_ ARCHIVAL PIGMENT PRINT
SIGNED / COURTESY OF THE ARTIST
GUIDEVALUE_ \$650



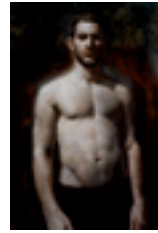
AMY OLIVER //

NIGHT LIGHT I, 2008
 SIZE_ 20x16 INCHES
 MEDIUM_ TYPE C-PRINT
 SIGNED / COURTESY OF THE ARTIST
 GUIDEVALUE_ \$800



SUSAN PAULSEN //

BLOCK ISLAND, 1998
 SIZE_ 3.25x3.25 INCHES
 MEDIUM_ GELATIN SILVER PRINT
 SIGNED / COURTESY OF THE ARTIST
 AND DEBORAH BELL PHOTOGRAPHS
 GUIDEVALUE_ \$2,000



EVAN PELLE //

SELF-PORTRAIT, 2008
 SIZE_ 36x24 INCHES
 MEDIUM_ OIL ON LINEN
 SIGNED / COURTESY OF BEAU PELLE
 GUIDEVALUE_ \$12,000



MELISSA ANN PINNEY //

IN THE WOODS, 2008
 SIZE_ 20x24 INCHES EDITION_ 1/25
 MEDIUM_ COLOR PHOTOGRAPH
 SIGNED / COURTESY OF THE ARTIST
 GUIDEVALUE_ \$1,400



MICHAEL PRINCE //

UNTITLED (DEBRIS ON BEACH)
 SIZE_ 16x20 INCHES
 MEDIUM_ ARCHIVAL PIGMENT PRINT
 SIGNED / COURTESY OF THE ARTIST
 GUIDEVALUE_ \$1,500



ELWOOD T. RISK //

LOVE WILL CONQUER, VERSION 4.0
 SIZE_ 20x30x2 INCHES EDITION_ 1/3
 MEDIUM_ DIGITAL PRINT ON CANVAS
 AND WOOD PANEL WITH RESIN / SIGNED
 COURTESY OF THE ROBERT BERMAN GALLERY
 GUIDEVALUE_ \$2,500



JIM RISWOLD //

SHOPPING WITH JEFF KOONS (3), 2008
 SIZE_ 21.5x18 INCHES
 MEDIUM_ ARCHIVAL PIGMENT PRINT
 SIGNED / COURTESY OF THE ARTIST
 GUIDEVALUE_ \$1,200



HERB RITTS //

NANDOYE AND NANGINI (REAR VIEW),
 AFRICA, 1993
 SIZE_ 14x11 INCHES MEDIUM_ GELATIN
 SILVER PRINT / PRINTED DURING THE
 ARTIST'S LIFETIME / STAMPED AND SIGNED
 BY MARK MCKENNA, CHAIRMAN HERB RITTS
 FOUNDATION EDITION_ 2/25 FROM AN
 EDITION OF 25 PLUS 3 AP'S / © HERB RITTS
 FOUNDATION / COURTESY HERB RITTS
 FOUNDATION AND FAHEY/KLEIN GALLERY
 GUIDEVALUE_ \$2,000



MICK ROCK //

QUEEN II, ALBUM COVER, 1974
 SIZE_ 20x16 INCHES
 MEDIUM_ ARCHIVAL QUALITY C-TYPE
 COLOR PRINT / AP 2/3 / SIGNED
 COURTESY OF THE ARTIST © 1974/2008
 GUIDEVALUE_ \$2,000



PAUL RUSCONI //

UNTITLED (MARY KATE), 2008
SIZE_ 20x16 INCHES
MEDIUM_ MIXED MEDIA
SIGNED / COURTESY OF THE ARTIST
GUIDEVALUE_ \$3,500



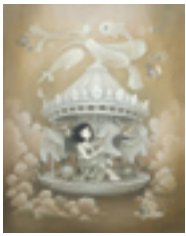
EMILY SHUR //

LOS ANGELES, 2008
SIZE_ 20x16 INCHES
MEDIUM_ EPSON PRINT
SIGNED / COURTESY OF THE ARTIST
GUIDEVALUE_ \$600



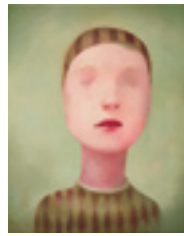
BORKUR SIGTHORSSON //

THE TANK #2
SIZE_ 47.25x36.5 INCHES
MEDIUM_ DIGITAL C-PRINT
SIGNED / COURTESY OF THE ARTIST
GUIDEVALUE_ \$2,000



AMY SOL //

KOKIRI CAROUSEL, 2008
SIZE_ 20.5x15 INCHES
MEDIUM_ GICLÉE / ARTIST PROOF 1/2
SIGNED / COURTESY OF THE ARTIST
GUIDEVALUE_ \$1,200



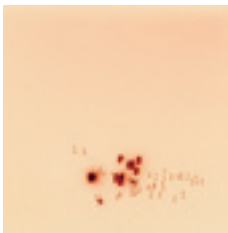
JOE SORREN //

FARAWAY
SIZE_ 28x24 INCHES
MEDIUM_ LITHOGRAPH
EDITION_ 19/95
SIGNED / COURTESY OF THE ARTIST
GUIDEVALUE_ \$525



ALEC SOTH //

MEMPHIS, TENNESSEE, 2000
SIZE_ 11x14 INCHES
MEDIUM_ CHROMOGENIC PRINT
SIGNED / COURTESY OF THE ARTIST
GUIDEVALUE_ \$1,200



NICKI STAGER //

MEADOW, 2005
SIZE_ 12x12 INCHES
MEDIUM_ C-PRINT FROM UNIQUE
PHOTOGRAM / SIGNED
COURTESY OF THE ARTIST
GUIDEVALUE_ \$1,000



GORDON STETTINUS //

THINGS OF BEAUTY, 1994
SIZE_ 18x18 INCHES
MEDIUM_ SEPIA TONED
PHOTOGRAPH EDITION_ 2/15
SIGNED / COURTESY OF THE ARTIST
AND ROBIN RICE GALLERY
GUIDEVALUE_ \$1,200



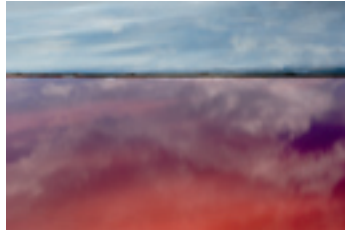
JOE SZABO //

NIGHT OWLS, 1971
SIZE_ 20x16 INCHES
MEDIUM_ GELATIN SILVER PRINT
SIGNED / COURTESY OF THE ARTIST
GUIDEVALUE_ \$1,200



MADOKA TAKAGI //

150TH ST AND BRAHURST AVE, NEW YORK
#121, MY PLACE, 1990/99
SIZE_ 14.375x14.375 INCHES
MEDIUM_ PLATINUM PRINT ON TISSUE
SIGNED © MADOKA TAKAGI COURTESY
DEBORAH BELL PHOTOGRAPHS
GUIDE VALUE_ \$2,500



DIANE TUFT //

RED SEA, 2005
SIZE_ 27x40 INCHES
MEDIUM_ CHROMATIC PRINT
EDITION_ 2/10 / SIGNED
COURTESY OF THE ARTIST
GUIDE VALUE_ \$7,500



ALISON VAN PELT //

UNTITLED (BIRD), 2008
SIZE_ 10x8 INCHES
MEDIUM_ OIL ON PAPER
SIGNED / COURTESY OF THE ARTIST
GUIDE VALUE_ \$4,500



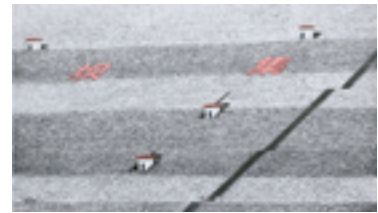
JONAH WARD //

BURNT PANEL QUAD #1, 2008
SIZE_ FOUR PANELS EACH 11x32 INCHES
MEDIUM_ GLASS BURNED MAPLE PANEL
SIGNED / COURTESY OF UNTITLED GALLERY,
SAUSALITO AND NATHAN WONG
GUIDE VALUE_ \$1,800



HIROSHI WATANABE //

RYOTA NAKAJIMA AS MANNOJO
MATSUO KABUKI, 2004
SIZE_ 14x14 INCHES
MEDIUM_ TONED GELATIN SILVER PRINT
SIGNED / COURTESY OF THE ARTIST
GUIDE VALUE_ \$1,200



STEPHEN WILKES //

BACKSIDE THREE GORGES DAM, CHINA, 2007
SIZE_ 16x20 INCHES
MEDIUM_ ARCHIVAL PIGMENT PRINT
SIGNED / COURTESY OF THE ARTIST
GUIDE VALUE_ \$1,500



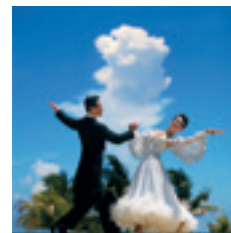
RUSSELL YOUNG AND MICK ROCK //

IGGY POP, GIMME DANGER, 2007
SIZE_ 62x48 INCHES
MEDIUM_ ACRYLIC AND ENAMEL
SCREEN PRINT ON LINEN
SIGNED / COURTESY OF THE ARTISTS
GUIDE VALUE_ \$15,000



CARRIE YURI //

UNTITLED (RESPECT YOUR MOTHER), 2006
SIZE_ TWO 16x16 INCH PRINTS
MEDIUM_ C-PRINTS
SIGNED / COURTESY OF THE ARTIST
AND SAM LEE GALLERY, LOS ANGELES
GUIDE VALUE_ \$2,400



FIROOZ ZAHEDI //

BALLROOM DANCERS, MIAMI, 1987
SIZE_ 7.5x7.5 INCHES
MEDIUM_ INKJET COLOR PRINT
SIGNED / COURTESY OF THE ARTIST
GUIDE VALUE_ \$1,000

